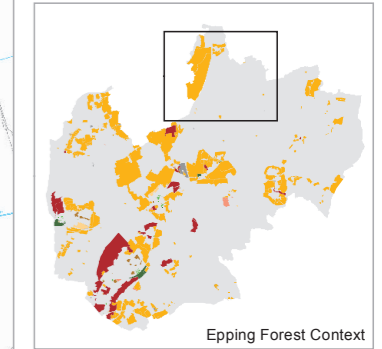


- Key**
- Epping Forest Local Authority Boundary
- Site Suitability**
- Sites filtered/discounted
  - Sites unsuitable due to other factors
  - Sites unsuitable due to strategic constraints
  - Sites suitable outside current policy (Green Belt & Other)
  - Sites suitable outside current policy (Green Belt)
  - Sites suitable outside current policy (Other)
  - Sites suitable within current policy
  - Sites suitable for commercial development



The SLAA does not allocate land for development or indicate that the Council would support its development. The sites provide a range of potential locations where development might be considered through the plan.

These maps show the emerging headline assessments from the suitability analysis of each site. They should only be interpreted alongside the full SLAA assessment for each site.

Headline site assessments relate to a site in its entirety. Constituent parts of some suitable sites, as per the boundary shown on this map, may not be suitable for development where factors affect only a portion of the site. The capacity of a site to accommodate development has been adjusted in these cases and the headline assessment relates only to the development capacity the SLAA has attributed to the site.



Project Epping Forest SLAA

Title Suitability - Lower Sheering, Matching Green, Sheering & Tilegate Green

Client Epping Forest District Council

Date 09.05.2012

Scale -

Drawn by MAr

Dwg. No GIS12991-015

Based upon Ordnance Survey mapping with the permission of Her Majesty's Stationery Office. © Crown Copyright reserved. Licence number AL50684A  
 GIS Reference: S:\CL12991 - Epping Forest SLAA\CL12991 - Epping Forest SLAA - SLAA Sites (000) - Suitability - 02\_04\_2012.mxd